



LA RIVIERE

MAPLE RIDGE





LA RIVIERE

MAPLE RIDGE

Nestled between the Fraser River and the iconic Golden Ears Mountain, La Riviere represents the best of all worlds. Inspired by modern French Interior Design, La Riviere is a boutique collection of studios, 1, 2 and 3 bedroom homes. Effortless chic with a rustic charm, La Riviere offers a vibrant community with a sense of quietness that reflects our unique quality of life.



LOCATION/ NEIGHBOURHOOD

La Riviere is located in the historic heart of Maple Ridge along the Fraser River and Haney Bypass.

Walking distance to the Port Haney Station, it's less than an hour away from downtown Vancouver on the WestCoast Express. Getting to La Riviere is easy and convenient, a quick 2 minute drive off Lougheed Highway and less than 15 minutes away off the Golden Ears Bridge, regardless of which direction you're coming from, it's centrally located.

Maple Ridge is part of the Tri-Cities area of Greater Vancouver making it easily accessible to major airports, ferry terminals and the US border. In an era where walkability is key, La Riviere is just steps away from local shops, restaurants and riverfront trails.



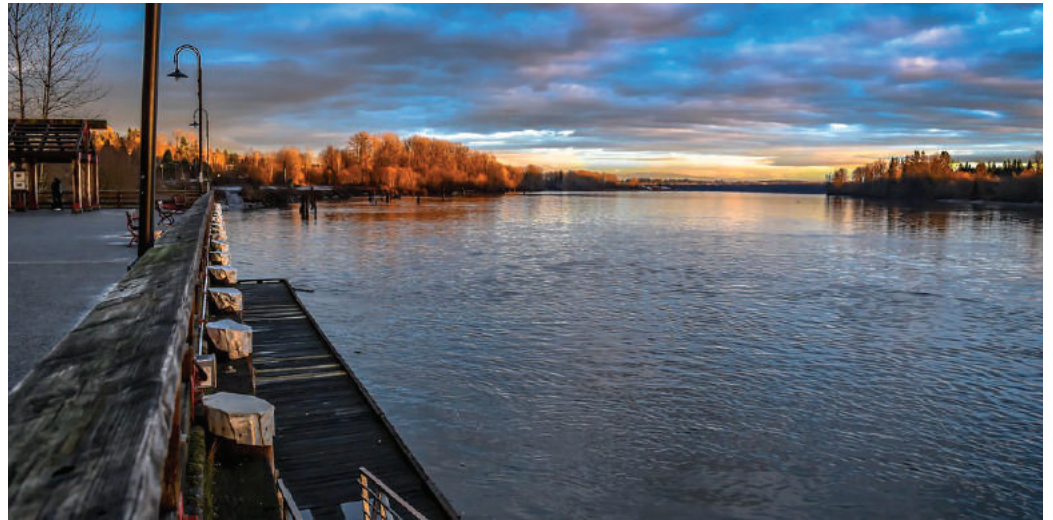


SERENE RIVER VIEWS

Maple Ridge is a great destination for an active lifestyle whether your preferred mode of travel is by foot, bike, horseback, canoe or kayak, the community is a place where people can unwind and enjoy the best of what nature has to offer.

LIFESTYLE

Take a stroll back in time on the Port Haney Historic Walk as you visit unique turn of the century heritage buildings, artisan coffee shops, and local merchants.



BUILDING FEATURES

La Riviere is truly one of the most prestigious condos in the area. Focused on green initiatives, La Riviere is a home designed for the innovation of today and prepared for those tomorrow. With every parking stall EV-Ready, green roof to aid in insulation of the building and a rain garden which naturally collects and filter run-off before it enters the storm drain system, residents have the peace of mind knowing that their home was consciously built.



AMENITIES

On-site, residents are invited to take advantage of an array of premier amenities including secure underground parking, EV charging station, meeting rooms, and a fitness studio. Spend time outside in the beautiful ground-level courtyard, or hang out in the rooftop garden lounge – it's your choice at La Riviere.





HOME FEATURES

Open floor plans are bright and inviting with full height windows to maximize views. High-performance appliances with a natural gas range and elegant, easy-to-clean cabinets with clever storage solutions, a kitchen that is sure to impress. Two designer color schemes offer timeless beauty with the fresh bright white of the La Lumiere or a dark gray contemporary hue of Le Fantome.

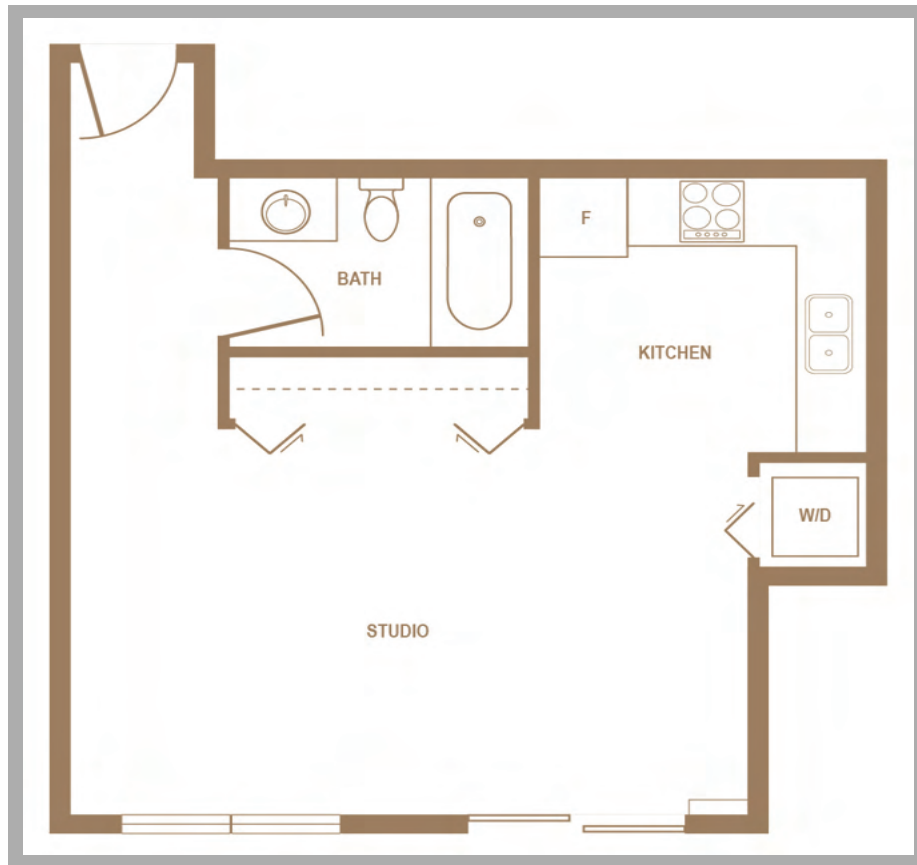


The developer reserves the right to make changes to floor plans, project design, specifications, finishes and features. Renderings, views and layouts shown are for general illustration purposes only and should not be relied upon to accurately represent the actual views that may be available or the actual completed building. This is not an offering for sale. An offering for sale can only be made by way of disclosure statement

FLOOR PLAN EXAMPLE

Studio 470 sq ft to 536 sq ft

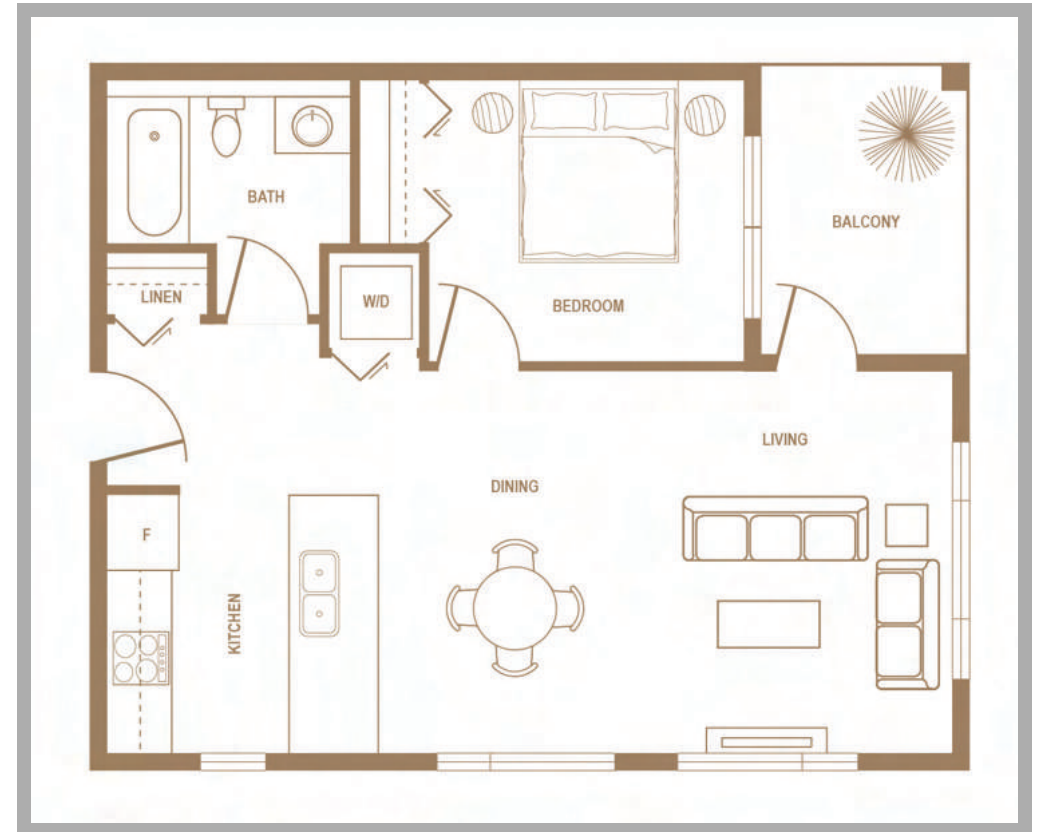
A



FLOOR PLAN EXAMPLE

1 Bedroom 575 sq ft to 671 sq ft

B

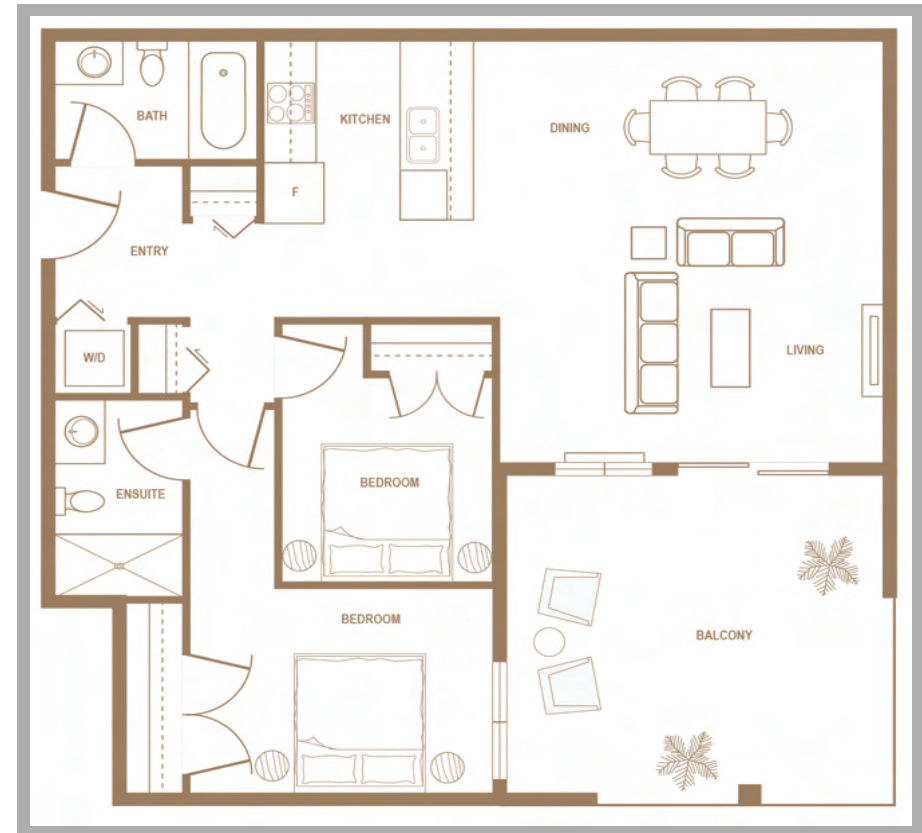


LA RIVIERE
MAPLE RIDGE

The developer reserves the right to make changes to floor plans, project design, specifications, finishes and features. Renderings, views and layouts shown are for general illustration purposes only and should not be relied upon to accurately represent the actual views that may be available or the actual completed building. This is not an offering for sale. An offering for sale can only be made by way of disclosure statement E.&O.E.

FLOOR PLAN EXAMPLE

2 Bedroom 814 sq ft to 902 sq ft



FLOOR PLAN EXAMPLE

3 Bedroom 965 sq ft to 1091 sq ft

D

