

SOMETHING  
AMAZING  
IS COMING TO  
ABBOTSFORD

JACOB  
ABBOTSFORD



## EXPECTED STARTING PRICES

<u>TYPE</u>	<u>STARTING FROM...</u>
1 BED   1 BATH	\$379,900
1 BED + FLEX   1 BATH	\$434,900
2 BED   1 BATH	\$529,900
2 BED   2 BATH	\$549,900

For more information: Eileen Ong PREC\* & Nicole Hall 236-427-5106

NOTE: This information is subject to change without notice. Invitation to treat only.



REDEKOP | FAYE

**PRESENTS...**

# JACOB

ABBOTSFORD

# THIS IS JACOB

Nestled in a quiet enclave just steps from Historic Downtown Abbotsford, an unparalleled new condo community is taking shape. Masterfully designed and thoughtfully planned, the residences at Jacob have been carefully crafted for the ultimate in space and lifestyle planning. With a fit and flow for the needs of every home buyer, Jacob's 1, 1+ den and 2 bed suites are a tribute to the necessity of art and expression.





# INCREDIBLE INTERIORS

Enter your new home at Jacob, your place of rest and restoration where elegance and simplicity await. Quartz counter tops conscientiously coordinate with modern day soft close cabinetry, chrome fixtures and high-quality laminate floors. Spacious well lit closets add form and functionality to the master bedroom's design, while the ensuite bathroom offers an inviting bathtub to unwind and relax in. Designed with entertaining in mind, the open-concept floor plan spans throughout the living, kitchen, and dining room all complimented by grand windows bringing in an abundance of natural light.





# AMAZING AMENITIES

Over an acre of pristinely manicured and professionally designed grounds await at Jacob. Lush and vibrant flora offer a serene and eclectic landscape, along with an open outdoor area - The Gathering Place - a spacious grassy entertainment venue with multiple seating arrangements, a children's play area, and soft outdoor lighting. Jacob's outdoor amenities create the perfect ambiance for entertaining and activities on a warm summer night or a crisp fall afternoon.



# THIS IS ABBOTSFORD



## JUST STEPS FROM YOUR DOOR

Located on the periphery of charming Historic Downtown Abbotsford, Jacob's residents are just steps away from evening entertainment, fine dining, boutique shops and bougie eateries. Home to some of the region's most colorful small businesses, Historic Downtown Abbotsford is the perfect place to share dinner with friends on an evening out or enjoy a stroll to one of the many cafes and coffee houses to start your morning.



The Jericho | Willoughby



Preston | Mission



Elliot | Chilliwack



REDEKOP | FAYE

With over 50 years combined experience working in the construction and development industry, Redekop Faye takes pride in building quality homes for everyday life. With a building background including construction management, Redekop Faye is a trusted and respected builder, that has completed over 5,000 multi family homes throughout B.C. Known for their attention to detail, quality construction and customer care. Redekop Faye takes great pride in building homes for a better future. They believe when the building is complete that's just the starting point, their extensive customer care team is available for the first 12 months of living in your brand new home. Every single Redekop Faye home is backed by a 2-5-10 third party home warranty provider. **BUILDING HOMES FOR A BETTER FUTURE**

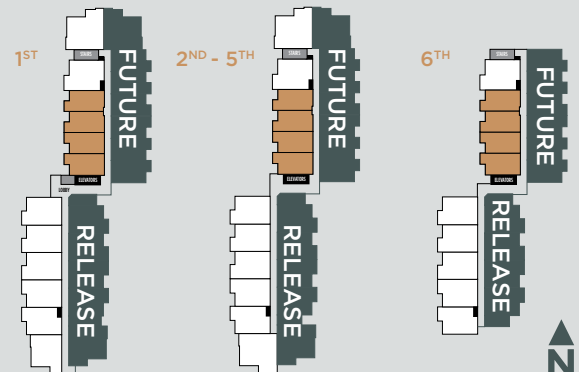
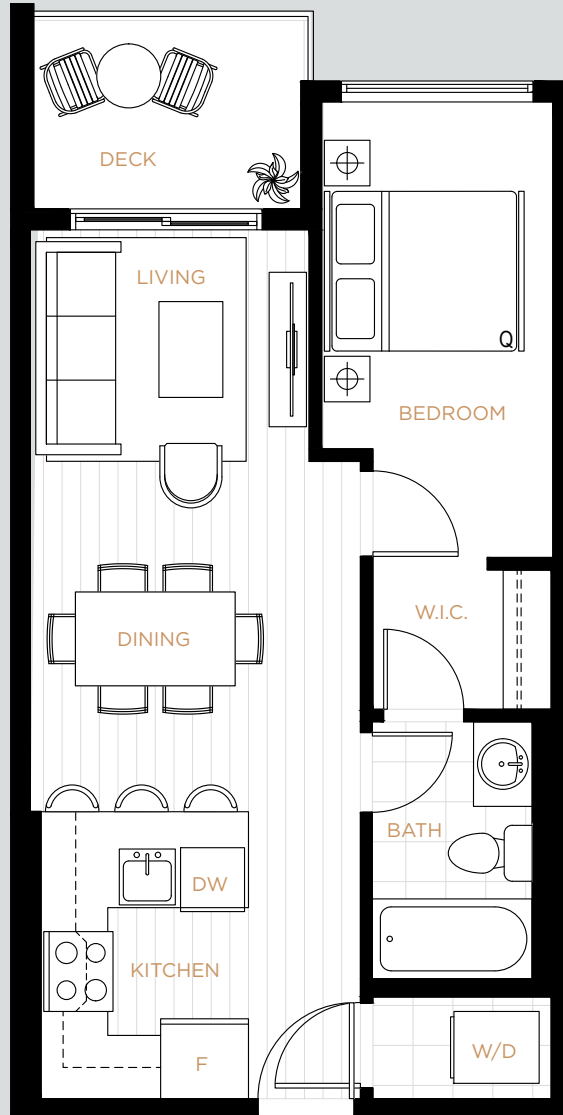
# PLAN B1

1 BED | 1 BATH | 515 - 530 SQ.FT.

Combined architectural plans B1, B2 & B3

# JACOB

ABBOTSFORD



The developer reserves the right to make changes, modifications or substitutions to the building design, specifications, and floor plans should they be necessary. Final floor plans may be a mirror image of the floor plans as shown. Square footage and room sizes are based on the preliminary survey measurements. Sizes are approximate and actual square footage may vary from the final survey and architectural drawings.



# PLAN C1

1 BED + FLEX | 1 BATH | 647 - 656 SQ.FT.

Combined architectural plans C1 & C7

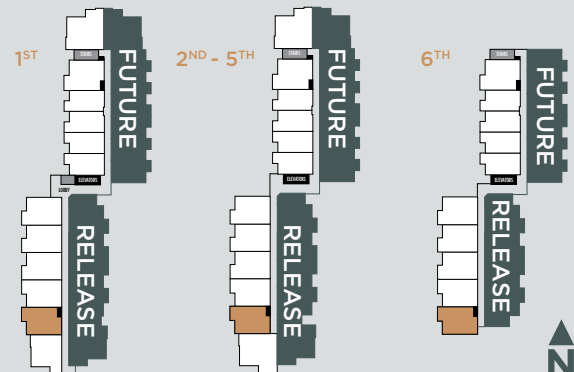
# JACOB

ABBOTSFORD



*\*Window Placement on end units*

*\*Not all units have entry closet*



**RF**  
REDEKOP | FAYE

**PMC** THE PARTNERS  
MARKETING GROUP

**kw** ELITE REALTY  
KELLER WILLIAMS

The developer reserves the right to make changes, modifications or substitutions to the building design, specifications, and floor plans should they be necessary. Final floor plans may be a mirror image of the floor plans as shown. Square footage and room sizes are based on the preliminary survey measurements. Sizes are approximate and actual square footage may vary from the final survey and architectural drawings.

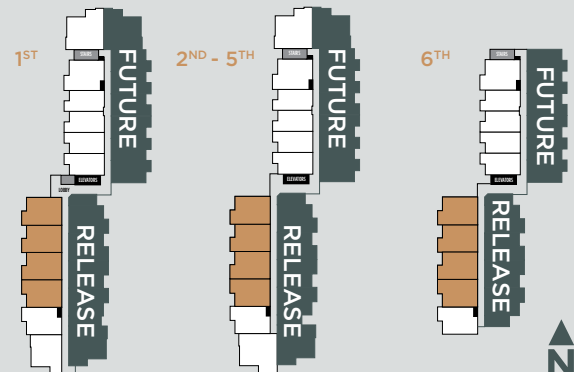
# PLAN C2

1 BED + FLEX | 1 BATH | 647 - 673 SQ.FT.

Combined architectural plans C2, C3, C4, C5 & C6

# JACOB

ABBOTSFORD



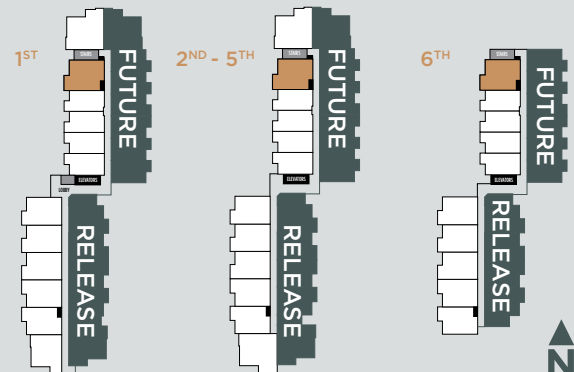
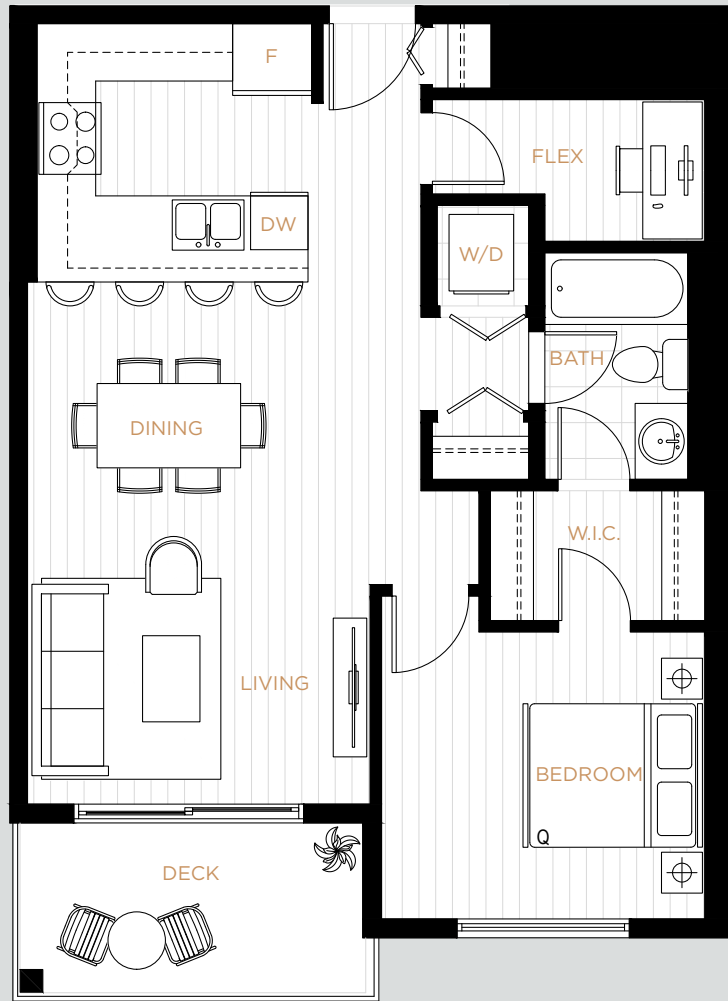
The developer reserves the right to make changes, modifications or substitutions to the building design, specifications, and floor plans should they be necessary. Final floor plans may be a mirror image of the floor plans as shown. Square footage and room sizes are based on the preliminary survey measurements. Sizes are approximate and actual square footage may vary from the final survey and architectural drawings.

# PLAN C8

1 BED + FLEX | 1 BATH | 730 SQ.FT.

# JACOB

ABBOTSFORD



**RF**  
REDEKOP | FAYE

**PMG** THE PARTNERS  
MARKETING GROUP

**kw** ELITE REALTY  
KELLER WILLIAMS

The developer reserves the right to make changes, modifications or substitutions to the building design, specifications, and floor plans should they be necessary. Final floor plans may be a mirror image of the floor plans as shown. Square footage and room sizes are based on the preliminary survey measurements. Sizes are approximate and actual square footage may vary from the final survey and architectural drawings.

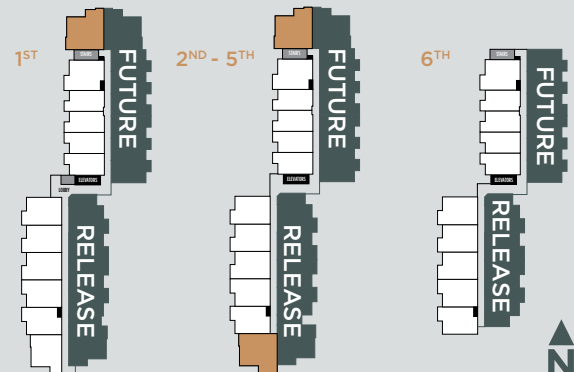
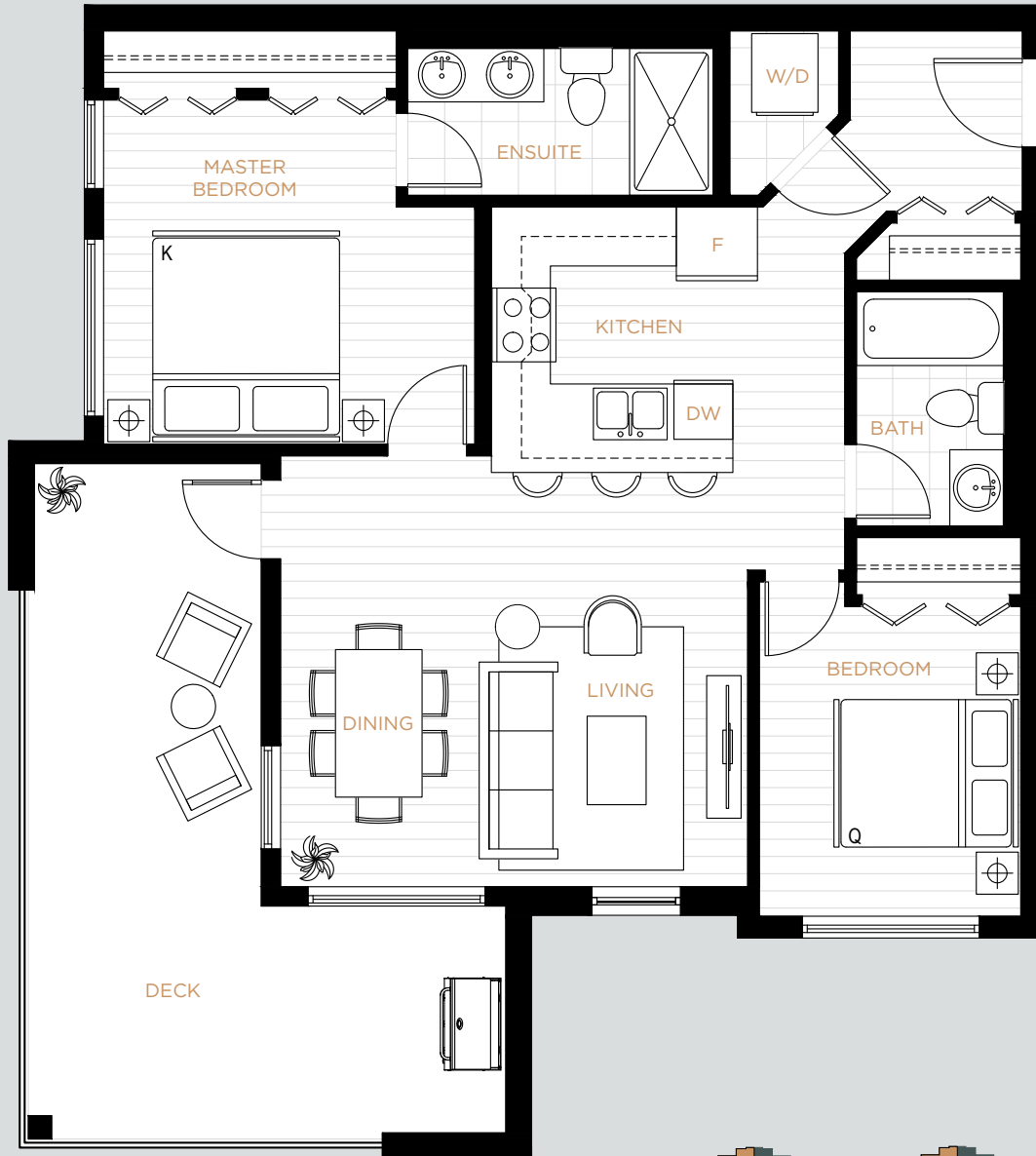
# PLAN D1

2 BED | 2 BATH | 882 - 904 SQ.FT.

Combined architectural plans D1, D1b, D1c & D1d

# JACOB

ABBOTSFORD



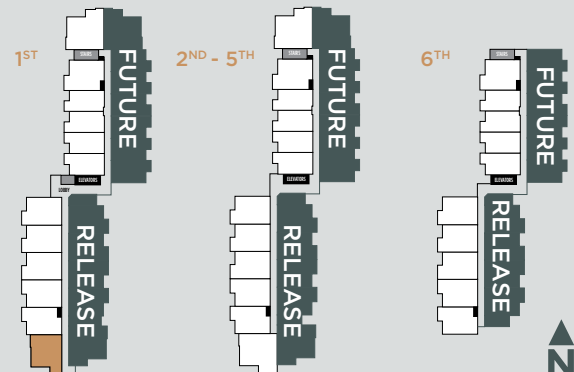
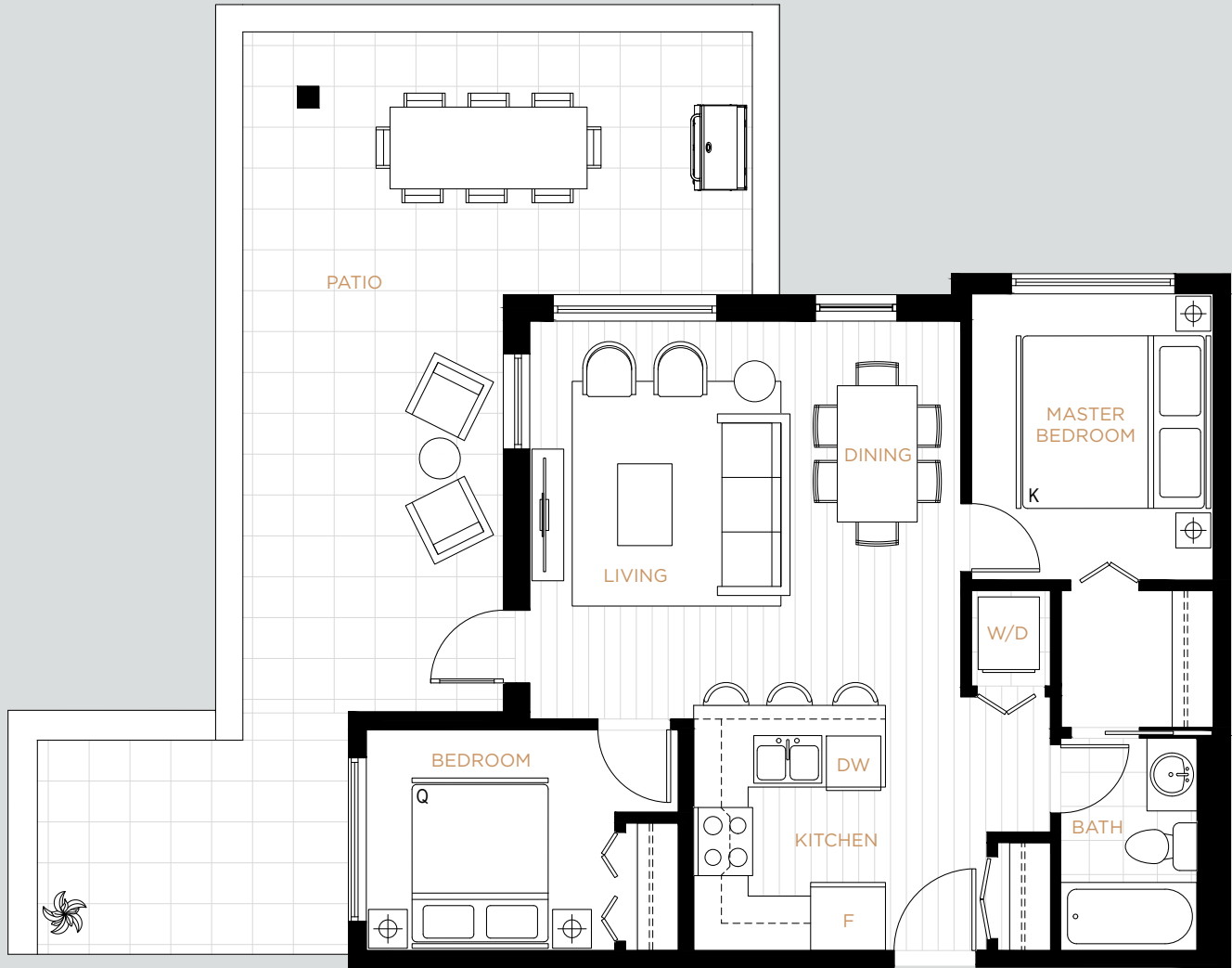
The developer reserves the right to make changes, modifications or substitutions to the building design, specifications, and floor plans should they be necessary. Final floor plans may be a mirror image of the floor plans as shown. Square footage and room sizes are based on the preliminary survey measurements. Sizes are approximate and actual square footage may vary from the final survey and architectural drawings.

# PLAN E1

2 BED | 1 BATH | 701 SQ.FT.

# JACOB

ABBOTSFORD



**RF**  
REDEKOP | FAYE

**PMG** THE PARTNERS  
MARKETING GROUP

**kw** ELITE REALTY  
KELLER WILLIAMS

The developer reserves the right to make changes, modifications or substitutions to the building design, specifications, and floor plans should they be necessary. Final floor plans may be a mirror image of the floor plans as shown. Square footage and room sizes are based on the preliminary survey measurements. Sizes are approximate and actual square footage may vary from the final survey and architectural drawings.



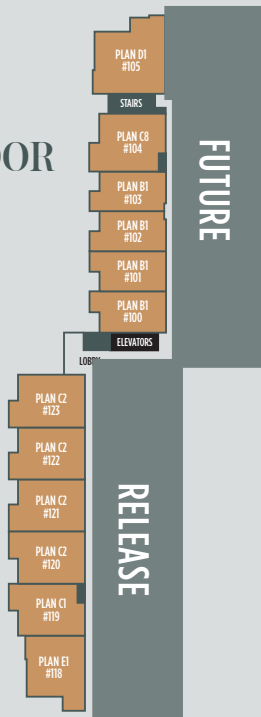


# JACOB

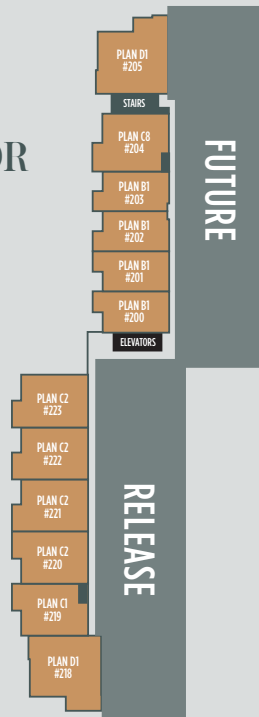
ABBOTSFORD

PINE ST.

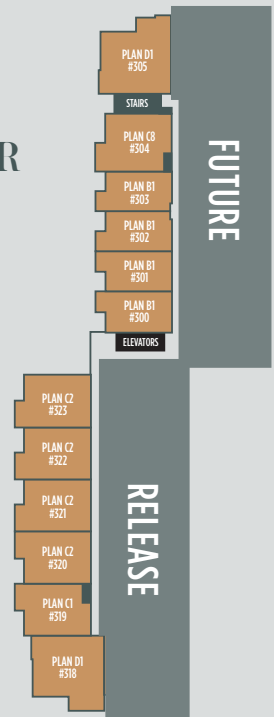
1ST FLOOR



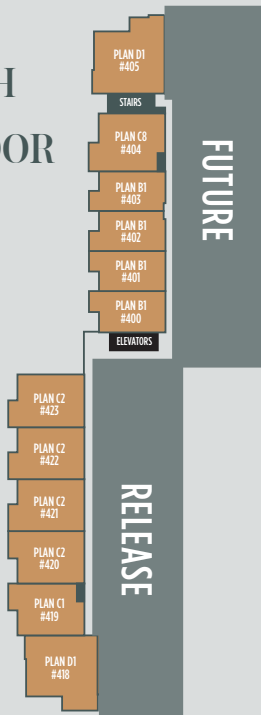
2ND FLOOR



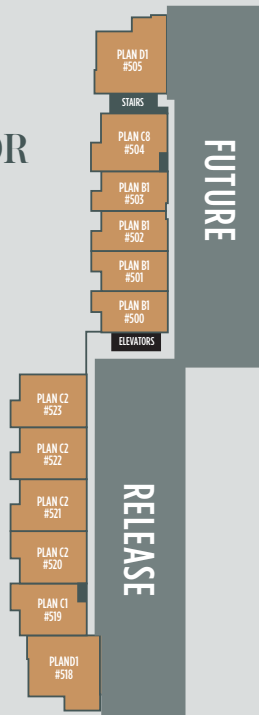
3RD FLOOR



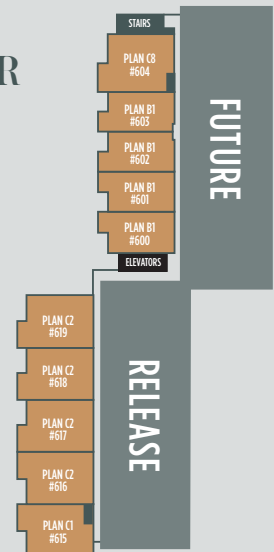
4TH FLOOR



5TH FLOOR



6TH FLOOR



GEORGE FERGUSON WAY



# REDEKOP | FAYE

## BUILDING HOMES FOR A BETTER FUTURE

### GOURMET KITCHENS

- Sophisticated quartz countertops compliment the dual bowl undermount sinks
- High quality stainless steel appliances including fridge, stove, dishwasher & microwave.
- All fridges are equipped with ice and water dispensers
- Under cabinet/over counter lighting provide ambiance and comfort

### BATHROOMS THAT PAMPER

- Clean and contemporary undermount sinks accentuated with polished white quartz countertops
- Classic polished chrome fixtures
- Elegant modern marble tile surround in all tubs and showers
- Overhead energy-efficient LED lighting

### LIVING IN COMFORT

- Luxurious laminate flooring throughout living, kitchen and dining
- Entertain in style with open concept kitchen & living areas
- Modern and sleek flat panel casings surround windows and doors
- Stylish and smooth chrome hardware
- Plush and soft high-quality carpets in bedrooms for a little warmth where you rest
- LED energy-efficient lights throughout your home
- Sound limiting walls and ceilings for peace and privacy
- High-efficiency front-loading washer and dryer
- Your safety in mind with built in sprinkler systems, CO2 and smoke alarms
- All homes come standard with one designated a/c power outlet (air conditioner not included)
- The Gathering Place, a spacious grassy entertainment venue with multiple seating arrangements
- Children's play area, perfect for families and right within the complex

### A HOME TO INVEST IN

- Enjoy your home today and for years to come with the comfort of a 2-5-10 year third party New Home Warranty
- Pets are welcome!
- Energy efficient and long-lasting construction with up to date rainscreen technology and Hardie Plank siding
- Rentals are permitted for 100 years so your investment can continue to grow
- All homes are backed by the decades of experience Redekop Faye's Principles bring to the table
- Charge Up! All parking stalls include rough-in for installation of personal EV charging stations. Redekop Faye offers an upgrade to install a networked EV Charging Solution, right in your very own parking spot. No more sitting at public charging stations waiting for a full battery, now you can charge your EV at home